



ANNUAL MEETING

- and -
PRESIDENTIAL
CELEBRATION

Tuesday, December 7, 2021

President's Letter -
Diane M. Heaton,
MD

Page 2

Scholarship Award
Recipients
Announced

Page 4

Welcome New
Members!

Page 5

TCMS PRESIDENT'S LETTER

DIANE M. HEATON, MD

\$30,000 bonus for RN's, \$10,000 per week for ICU COVID travelling nurses, floors closing secondary to lack of staffing, ER on diversion secondary to hospital staffing have all happened in the past 4 weeks in Tulsa.

It is becoming obvious that the next issue as the pandemic stretches into a third year is *staffing*. Hospitals have become understaffed to the point of having to limit admissions and care. This is predominantly with nursing staffing, but will eventually be with physician staffing. I see multiple early retirements, decreasing hours, stoppage of expansion plans, development of businesses outside of medicine that all add up to a decrease in physician manpower.

What is happening? I was recently at an annual meeting, very sparsely attended, and listened to a keynote speech by Wendy Dean, MD, a psychiatrist. Her message is we have a Moral Injury of Healthcare. That we as clinicians have trauma that is different from burnout when we see patients suffering when the suffering could of been prevented by having resources. Examples include the limiting of care, shortages of PPE and secondary staff COVID infections, backed up ER's with inability to transfer to tertiary centers, limited resources such as staff or supplies and the inability to have a voice that can quickly address the needs of the clinical staff. She noted that only 13% of small independent primary care physicians report burnout symptoms. I found the paper and in 1-5 physicians in small independent primary care practices in New York the burnout rates are very small 13% literally 20% of the rate of large system employed physicians. What is the difference? The small independent practices have control over decision making, work environment and develop the culture of the group and have closer relationships with patients.

So, has the thousands' year old practice of medicine as a small practice with direct responsibility to your patient become new again? First, lets examine why there has been a breakdown. Essentially, what is happening as the level of federal regulation has increased from HIPPA, STARK, MACRA, etc. the level of administrative tasks has multiplied exponentially as has the increase in administrators to service these requirements. A graph of the growth of administrative staff vs. clinicians since the 1970's clearly shows a flat line in clinical staff and an exponential growth in administrative staff. Many of these new hires are trained as MBA's and have business degrees. So, we now have a house divided with administrators who are trained to watch the bottom line and clinicians who are motivated by caring for the patients. For example, of how rapid thi has changed when I started medicine in the mid 90's we had senior nurses who worked part-time and helped to insure the essential staffing,

supplies, etc. were ordered and maintained. We had a CEO who was often a physician, a CFO, but very few staff who didn't directly work with patients at least on a part-time basis. I truly don't think we can put the genie back into the bottle, but with an additional 40% of the healthcare dollar going to non-clinical or non-patient related care we need to carefully think about the next steps.

The Moral Injury described by Dr. Dean is essentially this conflict, we are a house divided where clinical staff are attracted to the field by wanting to do good things, have empathy, value clinical outcomes and good care, they value the patient interactions and wish to build care models that have the well-being of the patients as the primary goal. The new administrative layers that have occurred in the past 30 years often are not trained as clinicians and have a difficult time with differing motivation models of bottom line finances and profitability. Obviously both are important, the key is understanding and valuing both groups.



Diane M. Heaton, MD

TCMS President

The COVID19 pandemic has clearly heightened this division but also given us the daylight to discuss the issues and develop and mature into a more cohesive model. The small community hospitals often run by religious organizations are not sustainable nor are large VC firms expecting 30-230% profit. Change will require not individuals, but groups. We, as physicians, must set aside any differences and as a group begin the change. We must start small and be consistent. We need physicians in board rooms leading the organizations. We also need to redevelop the small independent practices possibly with support of a

main organization. I like to think of this as essentially a franchise model. Administrators need to understand the motivation of physicians, value their leadership, and support the mission. Poor business models such as just-in-time sourcing that lead to PPE shortages have to be examined and eliminated.

The old adage, 'never let a good crisis go to waste,' is very true. We have rolling issues from the pandemic from supply issues to now staffing issues. If we do not address this inherent conflict with our divided house we will keep rocking from crisis to crisis. We are seeing many different approaches for profit entities essentially being sold into not-for-profit entities that are then held as bonds by States. I'll address more of these new models in my last presidents letter, till then, enjoy the fall and please take care of yourself. The care of our patients starts with a healthy physician in mind, body and spirit.

Sincerely,



Diane M. Heaton, M.D., President

TULSA COUNTY MEDICAL SOCIETY

Physicians Advancing Health Care

BOARD OF DIRECTORS

Diane Heaton, MD - President
Brian Macha, MD - Pres. Elect
Sharon Smallwood, MD - V.P.
Karen Gold, MD, MSCI
Peter Aran, MD
Stephen Bruns, MD
Stephen Gaway, MD
Justin Parschauer, DO
David Siegler, MD
Chris Sudduth, MD
James Webb, Jr., MD
Michael Weisz, MD

STUDENT RESIDENT COUNCIL LEADERSHIP

Brooke Reeves, OSU, OMSIV
Monica Ha, OU, MSIII

TCMS FOUNDATION

Physicians Caring for the Community

BOARD OF DIRECTORS

Lynn Frame, MD, Chair
James Cash, MD
Karen Gold, MD
David Griffiths, MD
Michael Hairston, CTFA
Diane Heaton, MD
Martina Jelley, MD
Brian Macha, MD
David Minielly
John Minielly, MD
Kulsum Siddiqui

TULSA COUNTY MEDICAL SOCIETY & TCMS FOUNDATION

A : 5315 S Lewis Ave
Tulsa, OK 74105
P : 918.743.6184
F : 918.743.0336
E : tcms@tcmsok.org

STAFF

Mark McElreath, MPA
Executive Director
TCMS & TCMS Foundation
mark@tcmsok.org

Joetta Cunningham
Director of Operations
TCMS
joetta@tcmsok.org

Pam Oppelt
Care Coordinator
Project TCMS
pam@tcmsok.org

Beverly Thompson
Special Events & Grants
Coordinator
Project TCMS
beverly@tcmsok.org

*Acceptance of advertising in Tulsa Medicine in no way constitutes professional approval or endorsement of products or services advertised.

YOU ARE INVITED!

ANNUAL MEETING

- and -
PRESIDENTIAL
CELEBRATION

The Board of Directors of Tulsa County Medical Society & TCMS Foundation cordially invite you and a guest as we conduct the 2021 Annual Meeting and Presidential Celebration.

Tuesday, December 7th, 2021

at

**Tulsa County Medical Society
5315 S. Lewis Avenue
Tulsa, OK 74105**

5:30 PM

Social Hour

Beer and Wine Served with Hors D'oeuvres

6:30 PM

Dinner and Main Program to follow

We also invite you to celebrate the renovation of the 2nd Floor of the TCMS Building renamed the C. Wallace Hooser, M.D. Community Center.

Due to the cancellation of the 2021 Presidential Inauguration, we will be honoring Karen P. Gold, M.D., M.S.C.I. TCMS President for 2020 and Diane M. Heaton, M.D. TCMS President 2021.

We will be honoring TCMS Members Upon their Retirement from 2020:

Haresh K. Ajmera, M.D.

David R. Hicks, M.D.

Stephen B. Campbell, M.D.

C. Anthony Howard, M.D.

Frederick I. Cohen, M.D.

Lana H. Oglesbee, M.D.

T. Jeff Emel, M.D.

R. Clio Robertson, M.D.

Fred Garfinkel, M.D.

Charles M. Strnad, M.D.

James W. Hendricks, M.D.

Kent A. Woolard, M.D.

To RSVP

Please call 918.743.6184

Email tcms@tcmsok.org

or RSVP online at <https://bit.ly/3EHSLVn>

Thank you to our Presenting Sponsor



UPCOMING EVENTS

NOVEMBER 7, 2021

OSMA Board of Trustees Meeting

NOVEMBER 24-26, 2021

TCMS, TCMS Foundation, and Project TCMS
Offices Closed for Thanksgiving Holiday

NOVEMBER 25, 2021

Thanksgiving Day

DECEMBER 1, 2021

TCMS Foundation Board Meeting
TCMS Office
6:00 PM

DECEMBER 7, 2021

TCMS & TCMS Foundation Annual Meeting
and Presidential Celebration
At TCMS, C. Wallace Hooser, M.D.
Community Center, 2nd Floor
5:30 PM Social Hour
6:30 PM Dinner

DECEMBER 10, 2021

Tulsa Retired Physicians Holiday Dinner
(Formerly Golden Oldies)
At TCMS, At TCMS, C. Wallace Hooser, M.D.
Community Center, 2nd Floor
6:00 PM

DECEMBER 23-27, 2021

TCMS, TCMS Foundation, and Project TCMS
Offices Closed for Christmas Holiday

DECEMBER 25, 2021

Christmas Day

DECEMBER 31, 2021-JANUARY 3, 2022

TCMS, TCMS Foundation, and Project TCMS
Offices Closed for New Years Holiday

PROPER PRESCRIBING VIRTUAL CME

Thursday, November 18, 6-7pm
Friday, December 3, 12-1pm

To sign up or for more information, contact
Sandy Deebea, 405-601-9571 or visit
www.okmed.org

*Signed into law in 2018, Oklahoma's Senate Bill 1446 mandates that all physicians complete one hour of CME in pain management per year. To help Oklahoma's physicians better understand how this new law impacts their practice and patients, the Oklahoma State Medical Association is hosting special CMEs in Oklahoma City and Tulsa. This one-hour event offers insight to the legal issues affecting pain management and an overview of the new laws connected with prescribing opioids to patients. All Oklahoma physicians with a DEA license are required to take this one hour course annually.

2021 SCHOLARSHIP AWARD RECIPIENTS

The Scholarship Fund of the Tulsa County Medical Society Foundation is honored to announce the recipients of the *Education Assistance Awards for 2021-2022*. Below you'll see a list and photo of the recipients. Congratulations to these students for their hard work, leadership, and community service.

M. Tomi Adewumi, OMSIV

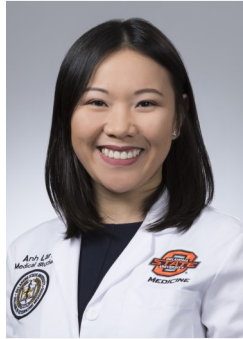


The Charles James Bate Memorial Scholarship Award

OSU College of Osteopathic Medicine

Specialty Interest: Otolaryngology

Anh Lam, OMSIV



The OSU Dean's Leadership Award

OSU College of Osteopathic Medicine

Specialty Interest: Internal Medicine

Austin Milton, MSII

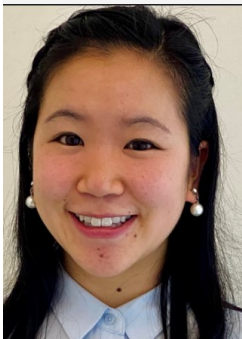


The OU Dean's Leadership Award

OU-TU School of Community Medicine

Specialty Interest: General Surgery, Otolaryngology

Rachel Ngo, MSII



The TCMS President's Leadership Award

OU-TU School of Community Medicine

Specialty Interest: Undecided

William Ogilvie, MSIV

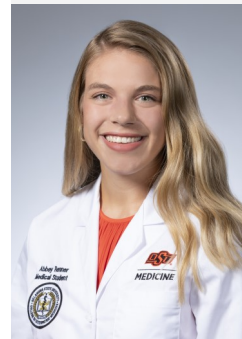


The TCMS Foundation Community Service Award

OU-TU School of Community Medicine

Specialty Interest: Otolaryngology, Surgery

Abbey Renner, OMSII



The Mona Whitmire Scholarship for Medical Students

OSU College of Osteopathic Medicine

Specialty Interest: Internal Medicine, Critical Care

Ayah Saleh, MSII



The Betty Louise Conrad Memorial Scholarship Award

OU-TU School of Community Medicine

Specialty Interest: Internal Medicine,

Anna Shadid, MSII

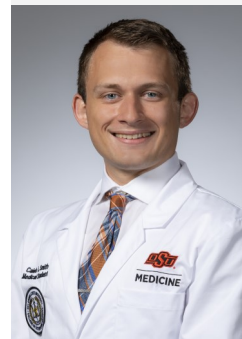


The TCMS President's Leadership Award

OU-TU School of Community Medicine

Specialty Interest: Pathology, OB-GYN

Caleb Smith, MSII



The TCMS Foundation Community Service Award

OSU College of Osteopathic Medicine

Specialty Interest: Internal Medicine

If you would like to make a tax-deductible donation to the Scholarship Fund, please call 918.743.6184 or visit tcmsok.org/donate-now to donate online.

WELCOME NEW MEMBERS!



Spenser H. Perloff, MD
OB-GYN

OU-Tulsa
4502 E 41st St Room 2A17
Tulsa, OK 74135
918-660-8350

Medical School: University of California, Davis, CA, 2012-2016

Residency: University of Missouri, Kansas City, MO, OB-GYN, 2016-2020

DON'T FORGET TO RENEW YOUR MEMBERSHIP!

The 2022 TCMS & OSMA Dues Statements have been mailed out to our membership. These invoices have a new look this year with several options including:

1. **Check** - Make payable to TCMS and mail to our office
2. **Credit Card** - Complete the information on your invoice and mail or fax to our office.
3. **Online** - Use the link to pay securely with Credit Card:
www.tcmsok.org/renew



Alpin D. Malkan, MD
Pediatric Surgeon

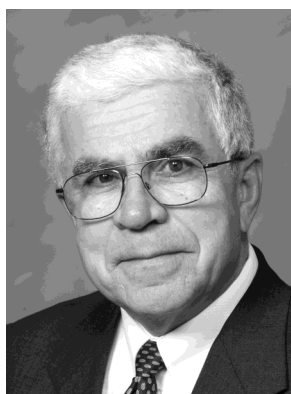
Warren Clinic
6151 S Yale Ave, Ste 1305
Tulsa, OK 74136
918-494-9437

Medical School: Ross University, Roseau, Dominica, 2002-2006

Internships: Saint Mary's Hospital, Waterbury, CT, General Surgery, 2006-2008 & General Surgery Pediatrics 2008-2009

Fellowships: Danbury Hospital, Danbury, CT, General Surgery, 2010-2013, St. Jude Children's Research Hospital, Memphis, TN, Pediatric Surgical Oncology, 2013-2015, Swedish Medical Center, Seattle, WA, Abdominal Transplantation, 2015-2016, Baylor College of Medicine, Houston, TX, Surgical Critical Care, 2016-2017, University of Tennessee Health Science Center, Memphis, TN, Pediatric Surgery, 2017-2019 & University of Texas Southwestern, Dallas, TX, Abdominal Transplantation, 2019-2020

IN MEMORIAM



John Daniel Hastings, M.D.

TCMS Member since 1979

John Daniel "Jack" Hastings, 80, slipped the surly bonds of earth and died peacefully of natural causes on Wednesday, April 28th in Jacksonville, Florida. Jack was a beloved husband, father, and grandfather as well as a friend to all. In addition to his lifelong commitment to helping others, Jack quietly embodied the virtues of sincerity and humility, and perhaps most significantly, grace and humor.

Jack was born to Ralph C. "RC" Hastings, M.D. and Helen Hastings (née Schmidt) in Chicago, Illinois. He attended Loyola Academy high school, Notre Dame University, and St. Louis University School of Medicine, and completed his neurology residency at the Mayo Clinic. He was a man of deep faith, and very proud of his Jesuit education. He came from a long line of physicians dedicated to upholding the Hippocratic oath.

Jack had a distinguished 50-year career as a physician both in neurology and aerospace medicine. He was himself a pilot, and held an enduring love of aviation. He logged thousands of hours of flight time, many in service of underserved communities and his aeromedical work. He passed his love of aviation on to his son Michael, who is currently an accomplished pilot.

Our deepest sympathies and condolences to the friends and family of Dr. Hastings.

For the complete obituary visit: <https://www.stjohnsfamilyfuneralhome.com/obituaries/John-Hastings-Md/#!/Obituary>



TULSA MEDICINE

A Newsletter for the Medical Community | November 2021

5315 S. Lewis Avenue
Tulsa, OK 74105-6539

SERVING OKLAHOMA HEALTHCARE FOR MORE THAN 40 YEARS

Proud to protect and defend more Oklahoma doctors than all other carriers combined.



LOCAL RISK
AND CLAIMS
MANAGEMENT
EXPERTS



DEDICATED
EXPERIENCE IN
OKLAHOMA
MEDICINE AND LAW



#1 CHOICE
OF OKLAHOMA
PHYSICIANS




PLICO

a MedPro Group/Berkshire Hathaway company

[Plico.com](https://plico.com)

MedPro Group is the marketing name used to refer to the insurance operations of The Medical Protective Company, Princeton Insurance Company, PLICO, Inc. and MedPro RRG Risk Retention Group. All insurance products are administered by MedPro Group and underwritten by these and other Berkshire Hathaway affiliates, including National Fire & Marine Insurance Company. Product availability is based upon business and/or regulatory approval and may differ among companies. © 2021 MedPro Group Inc. All Rights Reserved. PLICO-210201





You take care of your patients.
We take care of your financial future.



Trust Company Oklahoma

TrustOk.com | (918) 744-0553

6120 S. Yale Ave., Suite 1900 | Tulsa



Protecting Your Assets.
Growing Your Wealth.
Advising You For Life.

The world might have changed, but Trust Company of Oklahoma is always on your side.

Trust Company of Oklahoma would like to thank you and the entire health care community for your courage and your sacrifices during the pandemic.

This time of struggle has shown many people the benefit of seeking help. We stand ready to assist you in managing your investments, planning for a successful retirement and passing along your legacy to the next generation.

You can trust us to manage your assets with professional objectivity. Since all of our professionals are right here in Oklahoma, you'll always speak to your team.

Let's work together to make your money work for you. Call today to get started.



www.trustok.com



2022 MEMBERSHIP DUES INVOICE

INVOICE

1/1/2022

BILL TO

Name: _____
Address: _____
City, State, Zip: _____ Phone: _____
Email: _____

MESSAGE

Thank you for your membership in TCMS & OSMA. Now more than ever, we need each other, we need you!

The OSMA Board of Trustees has approved a COVID-19 Hardship waiver for 2022. OSMA Dues for those physicians whose practices have been financially impacted by the crisis. If you feel you need to take this hardship, simply mark and pay your selection below.

Please check which membership option you choose below

<input type="checkbox"/>	Option 1	TCMS (\$380) & OSMA (\$300) Membership Dues	680.00
<input type="checkbox"/>	Option 2	TCMS (\$380) & OSMA (\$150) Membership Dues (COVID)	530.00
<input type="checkbox"/>	+ AMA Membership Dues (Optional)		420.00

Choose Option 1 or Option 2 and add AMA if desired

Total

PAYMENT/CREDIT/DISCOUNTS APPLIED

(0.00)

TOTAL DUE BY 12/31/2021

Membership in TCMS and OSMA is required. TCMS is unified with the Oklahoma State Medical Association. Members must join both and dues are collected together. Membership in AMA is optional.

If your full-time working status has changed, please contact our office for lower-cost membership options.

Payment Options

- Check** – Make payable to TCMS and mail to our office
- Credit Card** – Complete information below and mail or fax to our office
- Online** – Use the link to pay with Credit Card online or Scan the QR code with the camera app on your phone or tablet: www.tcmsok.org/renew



Credit Card Number _____ Amount Paid _____

Name on Card _____ Expiration Date _____ Code _____

Zip Code for card _____ E-mail to send receipt to _____

Lobbying Fees: TCMS 0%, AMA 60%, OSMA 100% are not deductible as a business expense for federal income tax purposes. \$45 of the OSMA dues provides an annual subscription to the OSMA Journal. Membership in OSMA is required to continue OSMA Group Health Plan Coverage.

THANK YOU FOR YOUR MEMBERSHIP AND SUPPORT OF YOUR PHYSICIAN ORGANIZATIONS